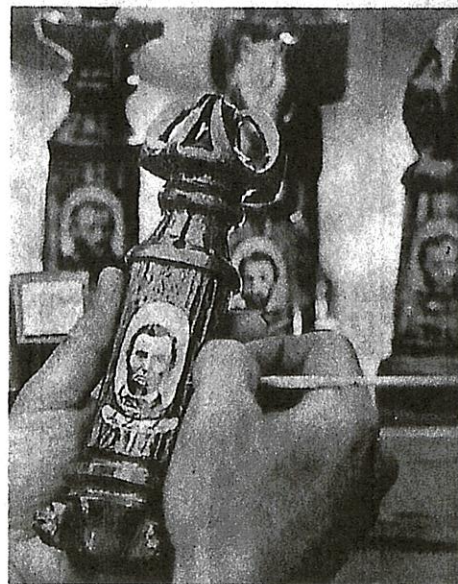


SOUTH KING PIECE



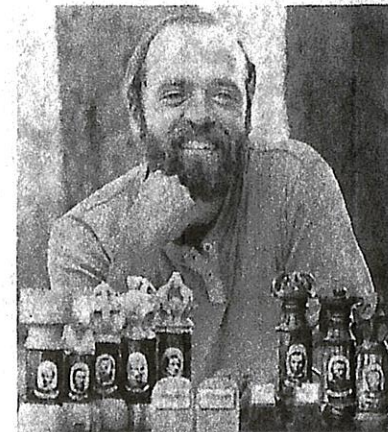
NORTH KING PIECE

AMERICAN CIVIL WAR MEMORIAL CHESS SET

Simeone conceived the idea for the work in 1977 after a show in Dallas, Texas. Four years in the making and three thousand hours of work were devoted to its completion. The woods used are cedar burl and maple. Barrel-like pieces of elk antler were selected and a portrait of a civil war illuminary is painstakingly painted on a polished portion of the antler.

Each capital piece is weighted with a one ounce mini-ball from the 1862 battle of Antietam, using both Northern and Southern shot. The pawns are in the shape of gravestones with an inlaid ivory placard containing the name of a major campaign or battle. The chess board is also the carrying case for the work. Simeone considers this his "capo lavoro" and usually revolves his art shows around the piece.

Simeone read extensively about this most unique and tragic war of American History.



He has been called the maker
of "instant heirlooms". . .



NORTH STAR
BOX 66
ELK RIVER, IDAHO 83827

Herb Simeone was born, raised and educated in Brooklyn, New York. He entered the Air Force in 1965 and spent five years of service as a pilot flying bomber and fighter aircraft. Simeone served a year in Vietnam as a forward Air controller with over two hundred combat missions. After separation from the service in 1970, he left his native New York for the mountains of North Idaho. He and his family now live in the small logging town of Elk River. Simeone paints at his mountain-top studio, often having to snowshoe the four miles in the winter months.

Simeone, a scrimshander and jewelry maker, also makes custom knives and letter openers. Works by the artist are in the collections of people throughout North America as well as many other countries. The artist is currently planning a series of shows, some of which may take him out of the country.

Photographic Credits:

Deborah Gilbertson

Everet E. Watson — Frontispiece

Dave Johnson — Biographical Photo